

Quick Guide USB adapter

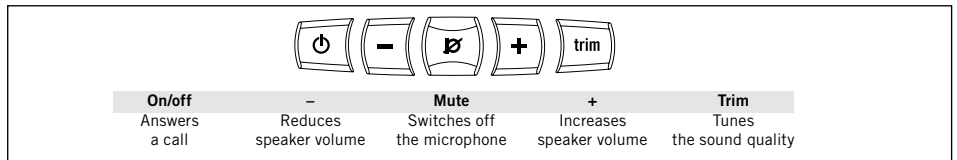
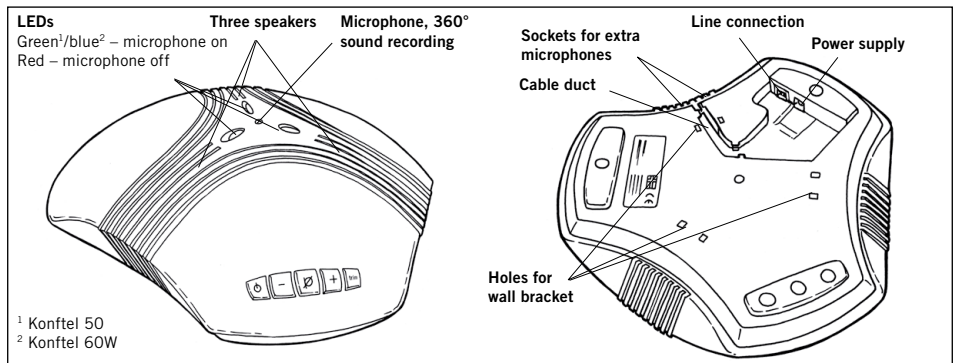
For connection of the Konftel 50 and
Konftel 60W to a computer

ENGLISH

Conference phones for every situation



DESCRIPTION – KONFTEL 50 AND 60W



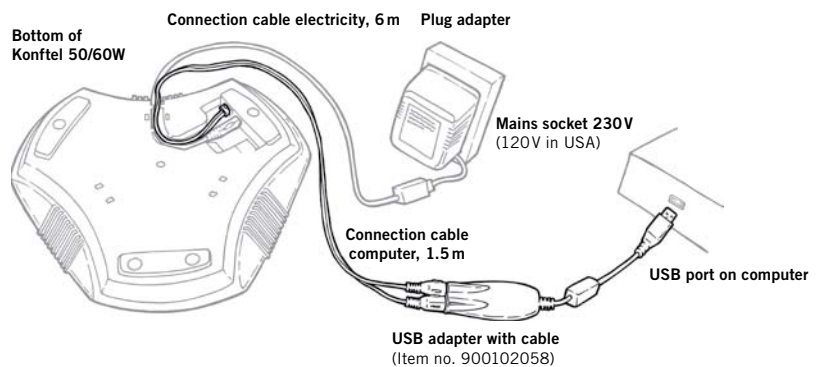
The **Konftel 50** and **Konftel 60W** are conference units for connection to an existing fixed system phone, DECT telephone, mobile phone or computer. The **USB adapter** makes it possible to connect the units to a computer that does not have a suitable sound port. The USB adapter functions as a sound card in a computer without inputs and outputs for sound. Connection with a USB adapter and its use are the same for both a Konftel 50 and a Konftel 60W.

You can use Konftel 50/60W for software that communicate over the Internet (e.g. Skype). You make, answer and end calls in the software. Konftel 50/60W functions as a speaker and microphone when it is switched on.

Konftel 50/60W has a omnidirectional, highly-sensitive microphone and three speakers which, together with Konftel's OmniSound® provide optimal sound quality and maximum reduction of room echo, even when the person speaking is standing at a slight distance from the unit. The user guide and Konftel's website www.konftel.com offer suggestions for various accessories and applications.

CONNECTION

Konftel is a leading company within loud-speaker communication and audio technology. We develop and sell products and technology for telephone meetings based on cutting-edge expertise within acoustics and digital signal processing. Characteristic of our products is that all conference telephones contain the same high quality audio technology – Omni-Sound® – providing crystal clear sound. Learn more about Konftel and our other products on www.konftel.com



- ⇒ Connect the USB adapter to Konftel 50/60W as shown in the picture.
Green plug --- Output labelled SPK on USB adapter
Pink plug ----- Output labelled MIC on USB adapter
- ⇒ Connect the USB adapter to a USB port on the computer as shown in the picture.
- ⇒ Plug Konftel 50/60W in using the power adapter as shown in the picture.
- ⇒ Check the sound properties and adjust the sound volume in the same way as for a computer with built-in inputs and outputs for sound as indicated in the instructions on the next page.



Developed by Konftel AB
Box 268, SE-901 06 Umeå, Sweden
Phone: +46 90 706 489
Fax: +46 90 131 435
E-mail: info@konftel.com
Web: www.konftel.com

SETTINGS ON THE COMPUTER

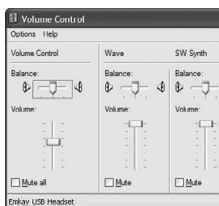
Checking the sound unit in Windows

There follows an example of how such items appear on a computer with Windows XP. In a Macintosh you open the computer's system settings to select sound inputs and adjust sound levels.



- ⇒ Open **Properties for Sound and Audio Devices**. (Right click on the speaker symbol in the Activity field and select **Adjust Audio Properties** from the quick menu or use the start menu: **Start > Control panel > Sound and Audio Devices**.)
- ⇒ Click on the **Audio** tab and check that **USB Headset** is selected as the default device.

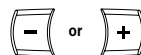
Adjust the speaker volume in Windows



- ⇒ Click on the **Volume...** button under **Sound playback** on the tab **Audio**.
- ⇒ Adjust the sound level for **Volume Control** so that it is between the intermediate and maximum level.
- ⓘ This setting adjusts the line output level from the computer. A low sound level here means that you must increase the volume on Konftel 50/60W to the maximum level, which may lead to fuzzy sound and a low sound level.
- ⇒ Check the sound level when you playback sounds (any sound source in the computer). Please note that Konftel 50/60W must be switched on.

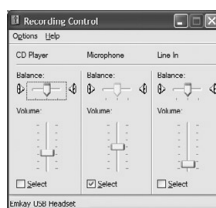
Adjusting the speaker volume on Konftel 50/60W

If necessary, the volume on Konftel 50/60W can be adjusted during a call.



- ⇒ Increase the speaker volume using **+** and reduce it using **-**.

Adjusting the microphone volume in Windows



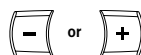
- ⇒ Click on the **Volume...** button under **Sound recording** on the tab **Audio**.
- ⇒ Adjust the microphone input between the intermediate and maximum level. Connect a call and adjust the volume if required.
- ⓘ It is best to use the communication software you intend to use with Konftel 50/60W when testing the microphone volume.

Adjusting the microphone volume on Konftel 50/60W

Adjust the microphone volume on Konftel 50/60W if required. Please note that Konftel 50/60W must be switched on.



- ⇒ Press and hold the **mute** button for 2 seconds until the LEDs start to flash and you hear a tone.



- ⇒ Increase the microphone volume using **+** and reduce it using **-**. Adjust the microphone volume one level at a time until the correct level is achieved.



- ⇒ Press the **mute** button to conclude setting the selected microphone volume.

USE

Answering a call



- ⇒ Press the **on/off** button to switch on Konftel 50/60W.
- ⇒ Answer the call using the communication software in the computer (e.g. Skype®).

Making a call



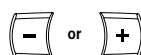
- ⇒ Press the **on/off** button to switch on Konftel 50/60W.
- ⇒ Make the call using the communication software in the computer (e.g. Skype®).

Ending a call



- ⇒ End the call at the computer.
- ⇒ Press the **on/off** button to turn off Konftel 50/60W.

Adjusting the speaker volume



- ⇒ Increase the speaker volume using **+** and reduce it using **-**.

Mute function



- ⇒ Press the **mute** button to turn off the microphone.

The LEDs change from green/blue to red. The other party cannot hear what you are saying.



- ⇒ Press the **mute** button again to switch the microphone back on.

Tuning the sound manually

Konftel 50/60W adjusts itself automatically when you switch it on to eliminate echo. It also senses changes in the room and continually adapts during the call. If, despite this, you still experience reduced sound quality, Konftel 50/60W can be tuned manually at any time.



- ⇒ Press **trim**.

A short audible signal is heard.